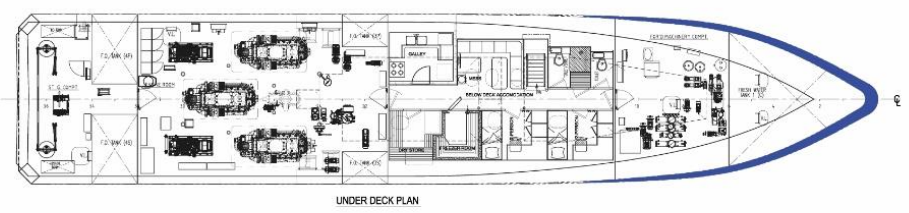
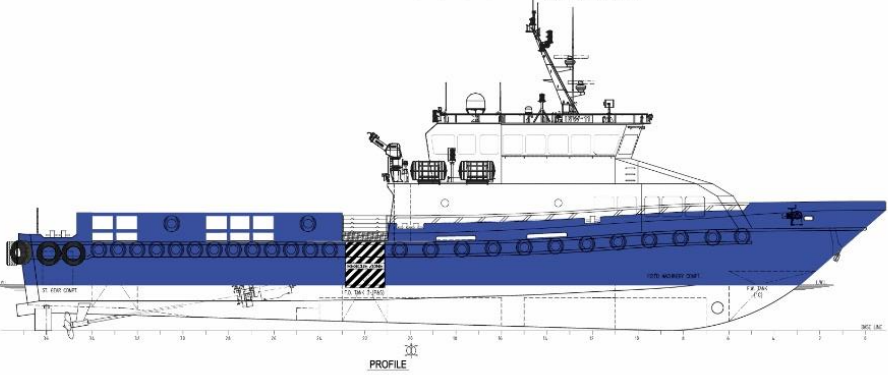
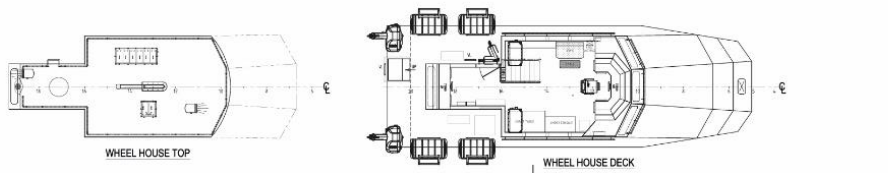




**M/Vs INW - 9, 11  
SISTER VESSELS (CREW BOATS)**

PRINCIPALE PARTICULARS		RADIO & NAVIGATION EQUIPMENT	
BUILT	2022	VHF / DSC – Encoder – Receiver	3 x SAILOR-7222
G.R.T	178 T	MF / HF Radio Telephony / RTF - DSC	INW-9: 1 x SAILOR-6310 INW-11: 1 x JRC - J55 - 2150
N.T	53 T	NAVTEX	1 x JMC – NT – 1800
Class	BV	AIS	1 x SAMYUNG - CLASS A - AIS S1 - 70 A
Notation	1 * HULL MACH	Portable two-way Transceivers	3 x JORTON - TRON TR30 GMDSS
	Crew Boat	GPS	1 x SIMRAD - P3007
Call Sign	Sea Area 3, In Water Survey	FBB	1 x SAILOR - FB - 150
	INW-9: HOA5349	EPIRB	1 x JORTON - TRON 60AIS
IMO No.	INW-11: HOA5350	RADAR 1	1 x KODEN - MDC - 2040
	INW-9: 9964560	RADAR 2	1 x KODEN - MDC - 5240
Flag	INW-11: 9964572	SART	1 x JORTON - TRON SART 20
	Panama	CHART PLOTTER	1 x GARMIN Model 1222
Hull Material	Aluminium	MAGNETIC COMPASS	1 x RIVIERA Model 86/W1
Super Structure Material	Aluminium	GYRO COMPASS	1 x YOKOGAWA Model CMZ 900B
Deck Strength	2 tons/m <sup>2</sup>	AUTOPILOT	1 x NAVITRON Model NT-888G
Clear Deck Area	70 m <sup>2</sup>	RUDDER ANGLE INDICATOR	NAVITRON Model NT-920RI
Deck Cargo	18 Tons	ECHOSOUNDER	1 x KODEN Model CVS 126
<b>DIMENSIONS</b>		ANEMOMETER	1 x OBSERVATOR Model OMC-115
Length Overall	34.3m	BNWAS	1 x NAVITRON Model NT-991
Length B.P	29.79m	LOUDHAILER	1 x HORIZON Model VLH-3000
Breadth Moulded	6.7m	BATTERY LESS TELEPHONE	1 x ZENITEL Model VSP
Depth	3.5m	TALKBACK SYSTEM	1 x JOTRON Model CIS-3100
Draft	1.8m	Search Lights	2 x FRANCIS
<b>MACHINERY</b>		SOUND SIGNALLING DEVICE	1 x ZOLLNER Model ZETFON 400/310
Main Engines	3 x Baudouin 12M62.3 1501 HP at 2200 rpm	CCTV	1 x VANTAGE
Auxiliary Engines	2 x Baudouin 4W105S 84 KW 415V/50Hz/3Ph	<b>LIFE SAVING EQUIPMENT</b>	
Gear Boxes	3 x ZF 3050 Reverse Reduction Gearbox	Life Buoys	8 Nos.
Bow Thruster	1 x Hydraulic Bow Thruster, rated 100 HP	Life Jackets	82 Nos.
Propellers	3 X Fixed Pitch Propeller (F.P.P) 5 BLADES, DIA: 1100 mm	Life Rafts	2 x 30 Persons / 2 x 25 Persons
Maximum Speed	25 Knots	Fire Man's outfits	2 Nos.
<b>CAPACITY</b>		<b>FIREFIGHTING EQUIPMENT</b>	
Fuel Oil	49 m <sup>3</sup>	<b>External</b>	
Fresh Water	20 m <sup>3</sup>	Fire Pump	1 x FFS Pump 800 m <sup>3</sup> /Hr coupled to the Center ME
<b>DISCHARGE RATE</b>		Fire Monitors	2 x Monitors
Fuel Oil	20 m <sup>3</sup> / hr. at 20 m head.	<b>Internal</b>	
Fresh Water	2 x 3 m <sup>3</sup> / hr. at 30 m head.	Co <sub>2</sub> system for E/R	Fixed central
<b>DECK MACHINERY</b>		GS & Fire Pump	1 x 33 m <sup>3</sup> /hr. at 30 m head
Windlass	1 x ROMAGNOLI Electric model W10-14EP1T2.2-3	Emergency Fire Pump	1 X 25 m <sup>3</sup> /hr. at 20 m head
Anchors	1 x High Holding Power Fully Balanced Anchor of 105 KG/each	<b>ALARM SYSTEMS</b>	
<b>ACCOMMODATION</b>		Gas Detection System	1 x HANWEI
Crew	10 Men	Fire Detection System	1 x CONSILIUM
<b>AUXILIARIES</b>		<b>AUXILIARIES</b>	
Seating Capacity	31 Passenger	STP	TECNICOMAR Model Ecomar 20 SX PP
Total	41 Men	OWS	RWO Model OWS-COM 0.5 (15 PPM)
Air Conditioning	Fully air conditioned	FO Purifier	GEA WESTFALIA Model OTC-2-02-137



**MAIN PARTICULARS**

LENGTH OVERALL	34.30 M.
BREADTH	6.70 M.
DEPTH	3.50 M.
DRAFT	1.8 M.
HULL	ALUMINUM
SPEED (MAX)	20 KNOTS @ CSR
DECK AREA	70 SQ.M
OFFSHORE PERSONNEL CAPACITY	31 PERSONS SEATING CAPACITY
CREW	10 Nos.
DECK LOADING	2 T/SQ.M
MAIN ENGINES	3 x 1500 BHP
PROPULSION	3 x FIXED PITCH PROPELLERS
GEAR BOX	3 x GEAR BOX
GENERATORS	2 x MARINE GEN SET RATED 84 kW 415V 50HZ 3PH
FRESH WATER TANKS	20.00 m <sup>3</sup>
FUEL OIL TANKS	48.00 m <sup>3</sup>

GA PLAN M/Vs INW - 9, 11

**AS FITTED**

APPROVED INFORMATION AND APPROVALS	DATE	AE	SA	ES	EA
COPY TO FROM TENDER GA 11/02/11	2010-02	AE	SA	ES	EA
REV	DESCRIPTIONS	DATE	ENR	RVNG	APFD

**INTERNATIONAL NAVAL WORKS**

PROJECT: **INW-11 (34.3M ALUM. CREW BOAT)**

PROJECT CONTENTS: **GENERAL ARRANGEMENT PLAN**

DESIGNED BY	CHECKED BY	DATE	DATE	DATE	REVISION
DESIGNED BY	CHECKED BY	DATE	DATE	DATE	REVISION
DESIGNED BY	CHECKED BY	DATE	DATE	DATE	REVISION

CLIENT: **INTERNATIONAL NAVAL WORKS**